

Logistics in UN Peacekeeping



National
Défence

Défense
nationale

CANADIAN ARMY
COMMAND AND STAFF
COLLEGE



COLLÈGE DE COMMANDEMENT ET
D'ÉTAT-MAJOR DE L'ARMÉE
CANADIENNE



Directorate of Military Training and Cooperation –
Canada
Direction de l'instruction et de la coopération militaire
– Canada

MAIN TEACHING POINTS

- UN Logistics Organisations
- Lease System
- Logistics Support requirements
- Logistics Planning
- How UN supports missions



National
Défence

Défense
nationale

CANADIAN ARMY
COMMAND AND STAFF
COLLEGE



COLLÈGE DE COMMANDEMENT ET
D'ÉTAT-MAJOR DE L'ARMÉE
CANADIENNE



Directorate of Military Training and Cooperation –
Canada
Direction de l'instruction et de la coopération militaire
– Canada

UN DEFINITION OF LOGISTICS

The means for supplying personnel, materials and services in timely and effective ways



... So What?



National
Défence

Défense
nationale

CANADIAN ARMY
COMMAND AND STAFF
COLLEGE



COLLÈGE DE COMMANDEMENT ET
D'ÉTAT-MAJOR DE L'ARMÉE
CANADIENNE



Directorate of Military Training and Cooperation –
Canada
Direction de l'instruction et de la coopération militaire
– Canada



THE UNITED NATIONS SYSTEM

PRINCIPAL ORGANS OF THE UNITED NATIONS

INTL COURT OF
JUSTICE

SECURITY
COUNCIL

GENERAL
ASSEMBLY

ECONOMIC &
SOC COUNCIL

TRUSTEESHIP
COUNCIL

SECRETARIAT

MILITARY STAFF COMMITTEE
STANDING COMMITTEES &
AD-HOC BODIES
ICTY
ICTR
UNMOVIC
UN COMPENSATION COMM
PK OPS & MISSIONS

MAIN COMMITTEES
SESSIONAL COMMITTEES
STANDING COMMITTEES &
AD-HOC BODIES
OTHER SUBSIDIARY
ORGANS

FUNCTIONAL
COMMISSIONS:
SOCIAL DEVELOP
HUMAN RIGHTS
CRIME & JUSTICE
SCIENCE & TECH
SUST DEVELOP
STATUS OF WOMEN
POPULATION & DEV
STATISTICAL

REGIONAL
COMMISSIONS:
AFRICA (ECA)
EUROPE (ECE)
LATIN AME (ECLAC)
ASIA & PACIFIC
(ESCAP)
WEST ASIA
(ESCWA)
UN FOREST FORUM

SPECIALIZED
AGENCIES:
ILO
FAO
UNESCO
WHO
WBG (IBRD, IDA,
IFC, MIGA,
ICSID)
IMF
ICAO
IMO
ITU
UPU
WMO
WIPO
IFAD
UNIDO

PROGRAMMES &
FUNDS:
UNCTAD (ITC)
UNDP (UNIFEM,
UNV)
UNHCR
UNDCP
UNICEF
WFP
UNEP
UNFPA
UNRWA

OTHER ENTITIES:
OHCHR
UNSSC
UNOPS
UNU

RESEARCH &
TRG INSTITUTES:
INSTRAW
UNITAR
UNIDIR
UNICRI
UNRISD

RELATED ORGANIZATIONS

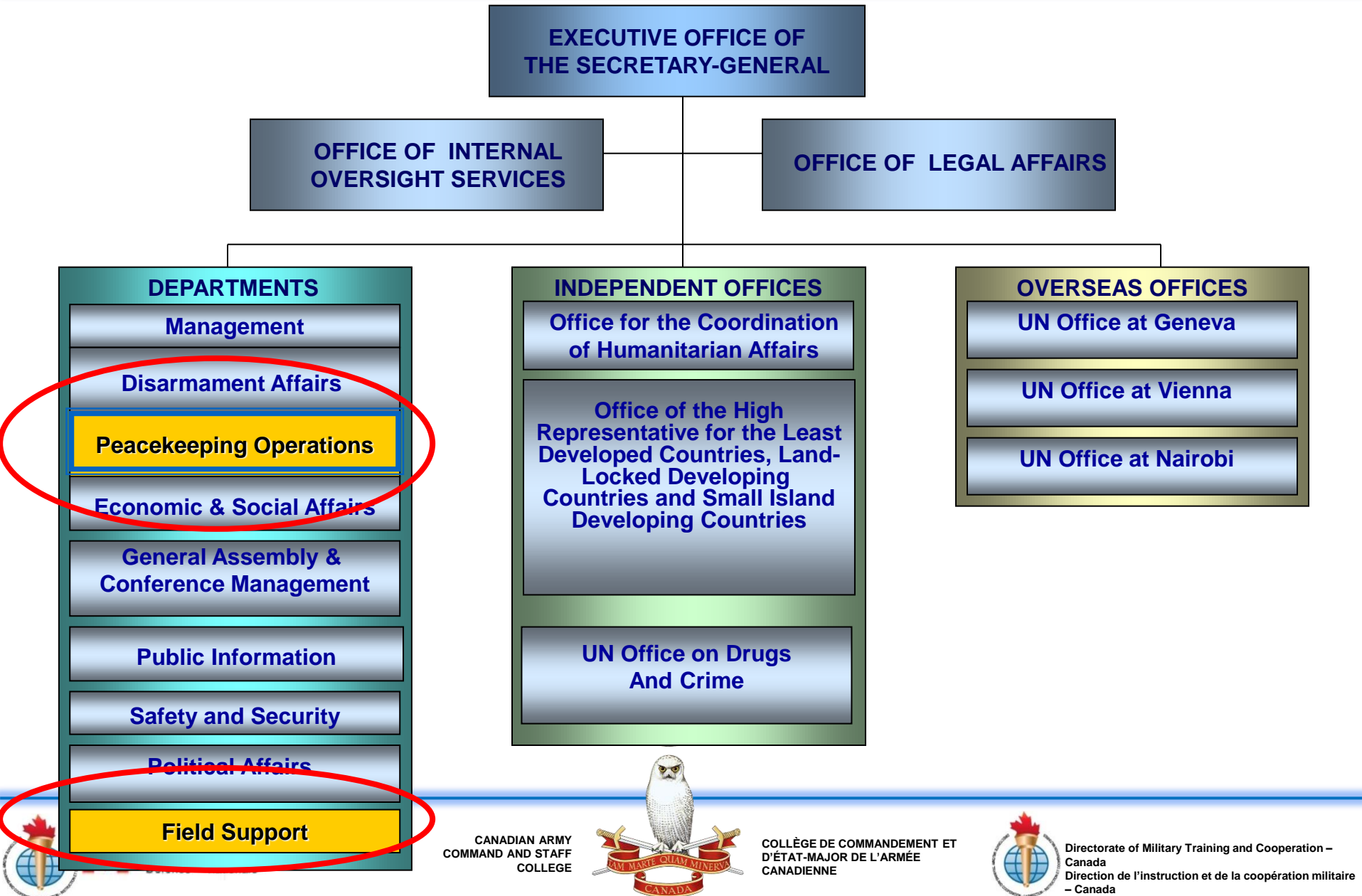
IAEA

WTO

CTBTO OPCW

World Tourism Org

THE SECRETARIAT



UN MISSION COMPONENTS

- Diplomatic and Political
- Human Rights
- Humanitarian Affairs
- Civilian Administration
- Public Information
- Electoral
- Civilian Police
- Legal
- Military (from Troop Contributing Countries)



National
Défence

Défense
nationale

CANADIAN ARMY
COMMAND AND STAFF
COLLEGE



COLLÈGE DE COMMANDEMENT ET
D'ÉTAT-MAJOR DE L'ARMÉE
CANADIENNE



Directorate of Military Training and Cooperation –
Canada
Direction de l'instruction et de la coopération militaire
– Canada

MEMORANDUM OF UNDERSTANDING

- All TCCs sign a MOU with the UN
- MOU details who provides what, and to what standard

Contingent Owned Equipment (COE) vs UN Owned Equipment (UNOE)



National
Defence

Défense
nationale

CANADIAN ARMY
COMMAND AND STAFF
COLLEGE



COLLÈGE DE COMMANDEMENT ET
D'ÉTAT-MAJOR DE L'ARMÉE
CANADIENNE



Directorate of Military Training and Cooperation –
Canada
Direction de l'instruction et de la coopération militaire
– Canada

LEASE SYSTEM IN PEACEKEEPING

- **“Wet lease”**
 - UN pays more
 - Country provides mission with logistical support
- **“Dry lease”**
 - UN pays less
 - Mission (or other) provides logistical support



National
Defence

Défense
nationale

CANADIAN ARMY
COMMAND AND STAFF
COLLEGE



COLLÈGE DE COMMANDEMENT ET
D'ÉTAT-MAJOR DE L'ARMÉE
CANADIENNE



Directorate of Military Training and Cooperation –
Canada
Direction de l'instruction et de la coopération militaire
– Canada

	WET LEASE	DRY LEASE
UN PROVIDES.....	<ul style="list-style-type: none"> • Warehouse & maintenance facilities • Water • Sewage services • Electrical power 	<ul style="list-style-type: none"> • Eqpt maintenance (commercial contract, UN pers, another contingent) • Supply of spares
CONTINGENT PROVIDES.....	<ul style="list-style-type: none"> • Deploy with serviceable eqpt (MOU +10%) • Maintain eqpt incl repair, replacement, labour, resupply • Link to national support channels 	<ul style="list-style-type: none"> • Deploy with serviceable eqpt (MOU + 10%)



National
Defence

Défense
nationale

CANADIAN ARMY
COMMAND AND STAFF
COLLEGE



COLLÈGE DE COMMANDEMENT ET
D'ÉTAT-MAJOR DE L'ARMÉE
CANADIENNE



Directorate of Military Training and Cooperation –
Canada
Direction de l'instruction et de la coopération militaire
– Canada

DEPLOYMENT

- UN responsible for deployment costs (LOA)
- Troops transported by air with cargo limit of 45kg per troop
- Initial MOU verification reports conducted by UN Mission staff
 - Any additional requirements identified
 - Inadequate support or deployment levels identified



National
Défence

Défense
nationale

CANADIAN ARMY
COMMAND AND STAFF
COLLEGE



COLLÈGE DE COMMANDEMENT ET
D'ÉTAT-MAJOR DE L'ARMÉE
CANADIENNE



Directorate of Military Training and Cooperation –
Canada
Direction de l'instruction et de la coopération militaire
– Canada

LOGISTICS REQUIREMENTS

- TCCs and Formed Police Units (FPUs)
 - as per COE MOU
 - Upon initial deployment, must be self-sustainable for 30-90 days
- Military Observers: vehicles, communications, office equipment, MSA
- UN Police: vehicles, communications, office equipment, MSA
- International civilians: vehicles, communications, office equipment, MSA



National
Defence

Défense
nationale

CANADIAN ARMY
COMMAND AND STAFF
COLLEGE



COLLÈGE DE COMMANDEMENT ET
D'ÉTAT-MAJOR DE L'ARMÉE
CANADIENNE



Directorate of Military Training and Cooperation –
Canada
Direction de l'instruction et de la coopération militaire
– Canada

SUSTAINMENT

- UN Materiel Resourcing
 - Housing, warehousing and offices
 - Ammunition (LOA)
 - Food
 - Water (source + bottling plants)
 - Bulk fuel
 - Power generation (to certain level)
 - Blood and blood products
 - MEDEVAC and Level 2 medical contingent
 - Engineer Contingent
 - Base Camp upkeep
 - Road and Infrastructure upkeep
 - Mine clearing



National
Defence

Défense
nationale

CANADIAN ARMY
COMMAND AND STAFF
COLLEGE



COLLÈGE DE COMMANDEMENT ET
D'ÉTAT-MAJOR DE L'ARMÉE
CANADIENNE



Directorate of Military Training and Cooperation –
Canada
Direction de l'instruction et de la coopération militaire
– Canada

THE SECRETARIAT

EXECUTIVE OFFICE OF THE SECRETARY-GENERAL

OFFICE OF INTERNAL
OVERSIGHT SERVICES

OFFICE OF LEGAL AFFAIRS

DEPARTMENTS

Management

Disarmament Affairs

Peacekeeping Operations

Economic & Social Affairs

General Assembly &
Conference Management

Public Information

Safety and Security

Political Affairs

Field Support

INDEPENDENT OFFICES

Office for the Coordination
of Humanitarian Affairs

Office of the High
Representative for the Least
Developed Countries, Land-
Locked Developing
Countries and Small Island
Developing Countries

UN Office on Drugs
And Crime

OVERSEAS OFFICES

UN Office at Geneva

UN Office at Vienna

UN Office at Nairobi



CANADIAN ARMY
COMMAND AND STAFF
COLLEGE



COLLÈGE DE COMMANDEMENT ET
D'ÉTAT-MAJOR DE L'ARMÉE
CANADIENNE



Directorate of Military Training and Cooperation –
Canada
Direction de l'instruction et de la coopération militaire
– Canada

DIRECTOR MISSION SUPPORT (DMS)

- Appointed by UNHQ
- Efficient and cost-effective administration
- Principal advisor to Head of Mission
- Control mission budget
- Administer to civilian staff



National
Défense

Défense
nationale

CANADIAN ARMY
COMMAND AND STAFF
COLLEGE

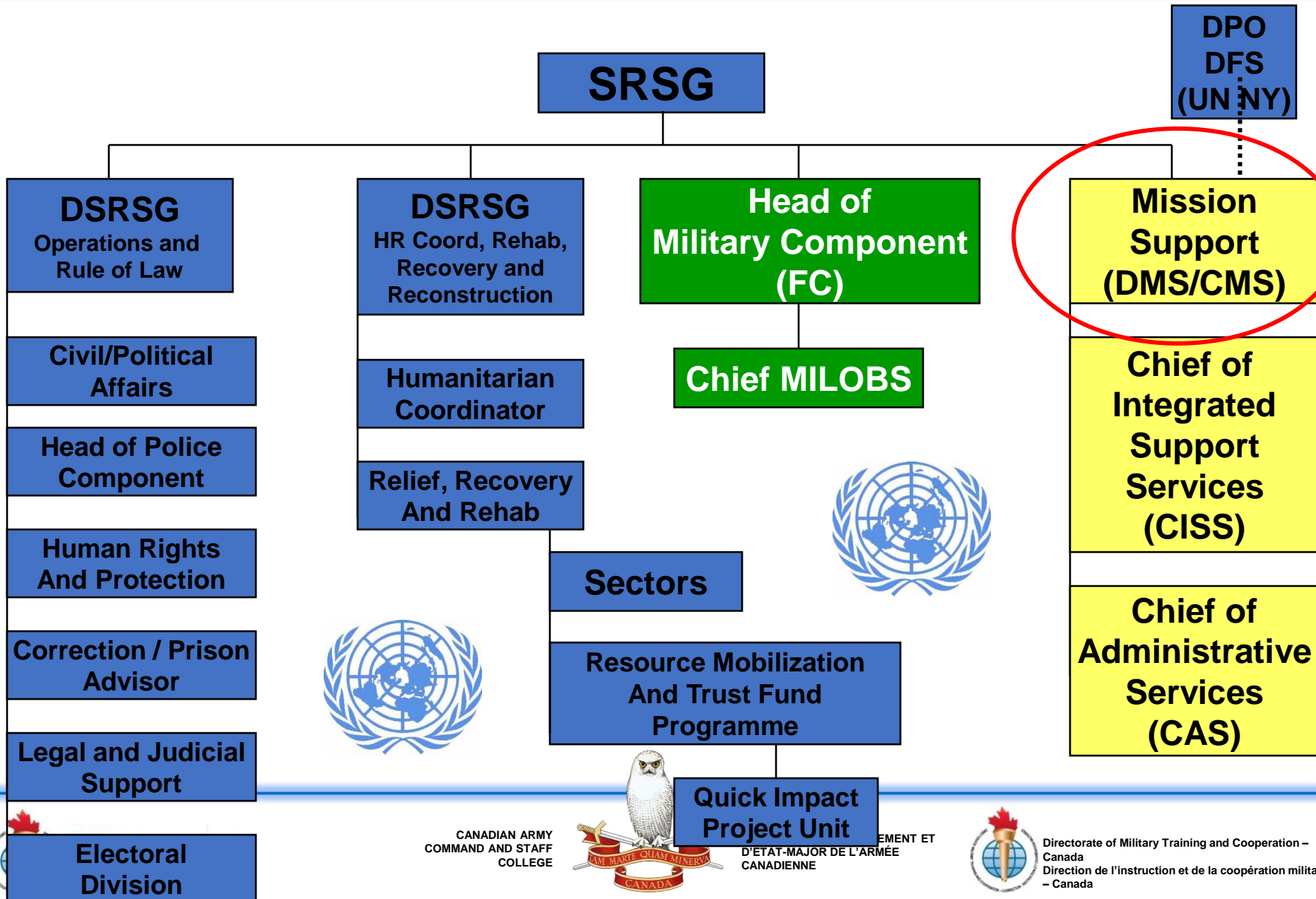


COLLÈGE DE COMMANDEMENT ET
D'ÉTAT-MAJOR DE L'ARMÉE
CANADIENNE



Directorate of Military Training and Cooperation –
Canada
Direction de l'instruction et de la coopération militaire
– Canada

MISSION ORGANISATION



DIRECTOR MISSION SUPPORT

CHIEF ADMINISTRATIVE SERVICES

CHIEF INTEGRATED SUPPORT SERVICES

FINANCE

PERSONNEL

LOG OPS /JLOC

PROCUREMENT

GENERAL
SERVICES

SUPPLY

TRANSPORT &
MAINTENANCE

SPSB
CRB
BOI

ENGINEERING

COMMS &
INFO TECH

MOVCON

**MEDICAL
SERVICES**

AVIATION

COE



National
Defence

Défense
nationale

CANADIAN ARMY
COMMAND AND STAFF
COLLEGE



COLLÈGE DE COMMANDEMENT ET
D'ÉTAT-MAJOR DE L'ARMÉE
CANADIENNE



Directorate of Military Training and Cooperation –
Canada
Direction de l'instruction et de la coopération militaire
– Canada

DIRECTOR MISSION SUPPORT

CHIEF ADMINISTRATIVE SERVICES

FINANCE

PERSONNEL

PROCUREMENT

GENERAL
SERVICES

PSB
CRB
BOI

CHIEF INTEGRATED SUPPORT SERVICES

LOG OPS /JLOC

SUPPLY

ENGINEERING

MOVCON

AVIATION

COE

TRANSPORT &
MAINTENANCE

COMMS &
INFO TECH

****MEDICAL
SERVICES****



National
Defence

Défense
nationale

CANADIAN ARMY
COMMAND AND STAFF
COLLEGE



COLLÈGE DE COMMANDEMENT ET
D'ÉTAT-MAJOR DE L'ARMÉE
CANADIENNE



Directorate of Military Training and Cooperation –
Canada
Direction de l'instruction et de la coopération militaire
– Canada

DIRECTOR MISSION SUPPORT

CHIEF ADMINISTRATIVE SERVICES

FINANCE

PERSONNEL

PROCUREMENT

GENERAL
SERVICES

PSB
CRB
BOI

CHIEF INTEGRATED SUPPORT SERVICES

LOG OPS /JLOC

SUPPLY

ENGINEERING

MOVCON

AVIATION

COE

TRANSPORT &
MAINTENANCE

COMMS &
INFO TECH

****MEDICAL
SERVICES****



National
Defence

Défense
nationale

CANADIAN ARMY
COMMAND AND STAFF
COLLEGE



COLLÈGE DE COMMANDEMENT ET
D'ÉTAT-MAJOR DE L'ARMÉE
CANADIENNE



Directorate of Military Training and Cooperation –
Canada
Direction de l'instruction et de la coopération militaire
– Canada

DIRECTOR MISSION SUPPORT

CHIEF ADMINISTRATIVE SERVICES

FINANCE

PERSONNEL

PROCUREMENT

GENERAL
SERVICES

PSB
CRB
BOI

CHIEF INTEGRATED SUPPORT SERVICES

LOG OPS /JLOC

SUPPLY

TRANSPORT &
MAINTENANCE

ENGINEERING

COMMS &
INFO TECH

MOVCON

**MEDICAL
SERVICES**

AVIATION

COE



National
Defence

Défense
nationale

CANADIAN ARMY
COMMAND AND STAFF
COLLEGE



COLLÈGE DE COMMANDEMENT ET
D'ÉTAT-MAJOR DE L'ARMÉE
CANADIENNE



Directorate of Military Training and Cooperation –
Canada
Direction de l'instruction et de la coopération militaire
– Canada

ISS RESPONSIBILITIES

- Develop mission logistic support plans
- Coordinate logistic and tech support matters with other mission component chiefs
- Monitor/oversee budget, personnel, and material issues within ISS
- Control contract management and COE
- Provide support to the mission
- Raise requisitions for material as required
- Provide logistic advice as required to Mission HQ personnel



National
Defence

Défense
nationale

CANADIAN ARMY
COMMAND AND STAFF
COLLEGE



COLLÈGE DE COMMANDEMENT ET
D'ÉTAT-MAJOR DE L'ARMÉE
CANADIENNE



Directorate of Military Training and Cooperation –
Canada
Direction de l'instruction et de la coopération militaire
– Canada

UN MISSION COMPONENTS

- Diplomatic and Political
- Human Rights
- Humanitarian Affairs
- Civilian Administration
- Public Information
- Electoral
- Civilian Police
- Legal
- Military (from Troop Contributing Countries)



National
Défence

Défense
nationale

CANADIAN ARMY
COMMAND AND STAFF
COLLEGE



COLLÈGE DE COMMANDEMENT ET
D'ÉTAT-MAJOR DE L'ARMÉE
CANADIENNE



Directorate of Military Training and Cooperation –
Canada
Direction de l'instruction et de la coopération militaire
– Canada

SRSG

Force Commander FC

Chief of Staff COS

Chief Logistics Officer / G4

Supply SUP

Food Service FDSVC

Transportation TPT

Maintenance MAINT

Movement Control MOVCON

Engineers ENGRS

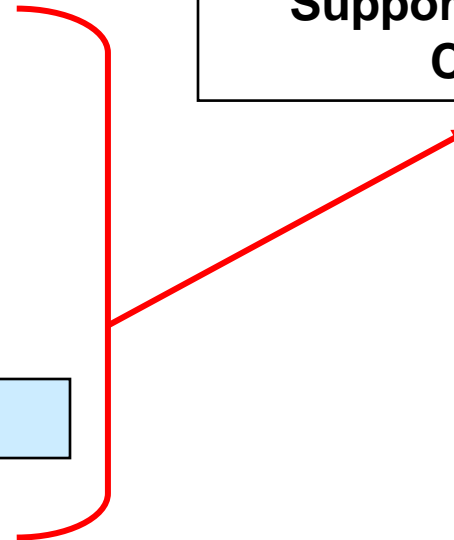
Signals SIGS

Observation Post OPS

Personnel PERS

**Director of Mission Support
DMS**

**Chief Integrated
Support Services
CISS**



Nation
Defer

DIAN ARMY
AND STAFF
COLLEGE

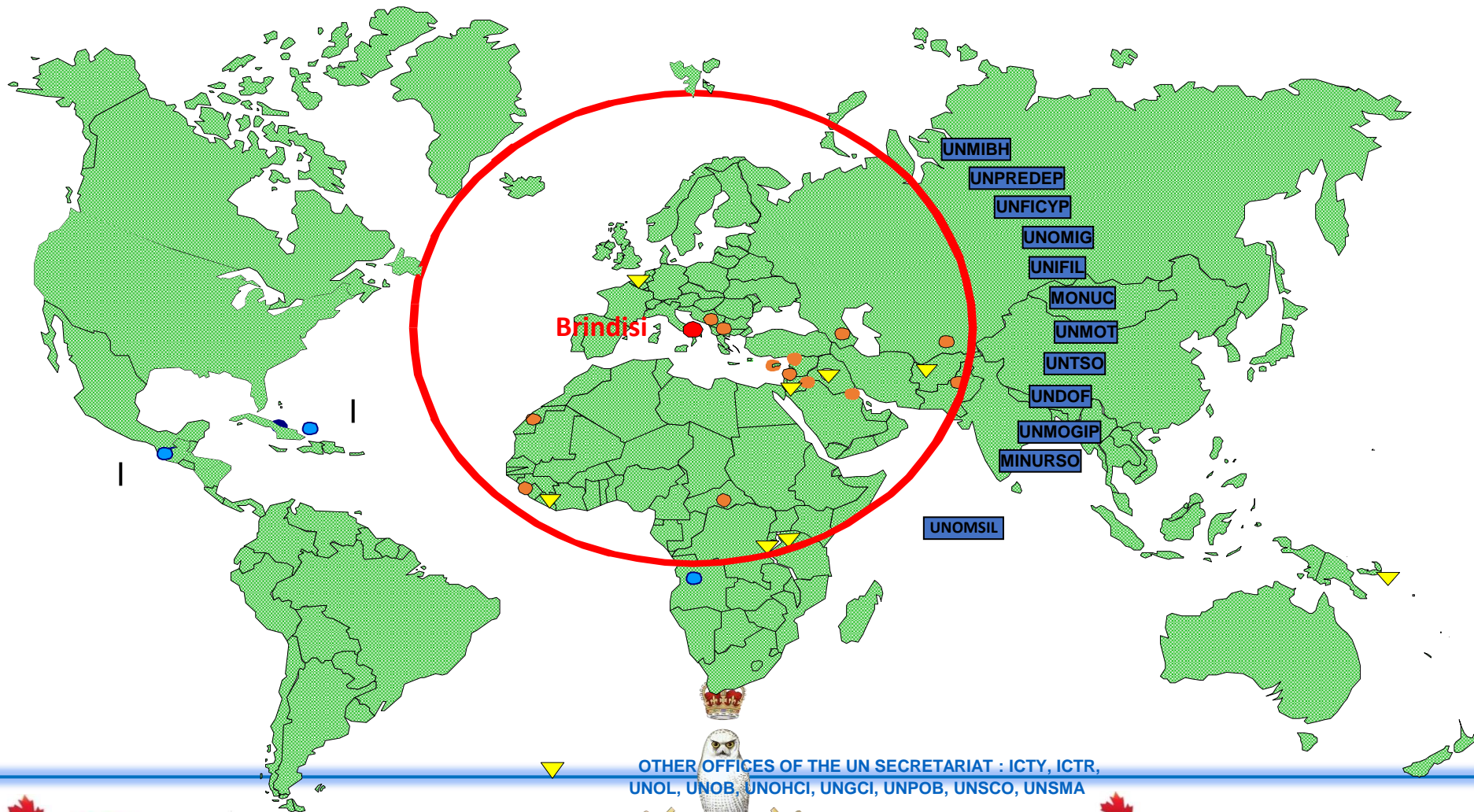


COLLÈGE DE COMMANDEMENT ET
D'ÉTAT-MAJOR DE L'ARMÉE
CANADIENNE



Directorate of Military Training and Cooperation –
Canada
Direction de l'instruction et de la coopération militaire
– Canada

UN LOG BASE BRINDISI (UNLB)



National
Défence

Défense
nationale

CANADIAN ARMY
COMMAND AND STAFF
COLLEGE



COLLÈGE DE COMMANDEMENT ET
D'ÉTAT-MAJOR DE L'ARMÉE
CANADIENNE



Directorate of Military Training and Cooperation –
Canada
Direction de l'instruction et de la coopération militaire
– Canada

UNLB



UN LOGISTICS BASE: BRINDISI

- Prepare and issue mission start-up kits
- Receipt, warehouse and issue depot stock
- Manage strategic deployment stocks
 - Support for 10,000 troops
 - 1000 UNMOs and CIVPOLs
 - 300 substantive staff
 - 1000 UN support staff
- Maintain depot inventory data base
- Field mission training centre
- Manage mission satellite communications link



National
Defence

Défense
nationale

CANADIAN ARMY
COMMAND AND STAFF
COLLEGE



COLLÈGE DE COMMANDEMENT ET
D'ÉTAT-MAJOR DE L'ARMÉE
CANADIENNE



Directorate of Military Training and Cooperation –
Canada
Direction de l'instruction et de la coopération militaire
– Canada

SUMMARY

- Logistics Organisation
- Lease System
- Logistics support requirements
- Logistics Planning
- How UN supports missions
 - DMS supervises logistics system of mission
 - Support for formed units is based on MOU
 - UN reimburses country for peacekeepers, equipment
 - Different support system for individuals (mil / pol / civ)



National
Défence

Défense
nationale

CANADIAN ARMY
COMMAND AND STAFF
COLLEGE



COLLÈGE DE COMMANDEMENT ET
D'ÉTAT-MAJOR DE L'ARMÉE
CANADIENNE



Directorate of Military Training and Cooperation –
Canada
Direction de l'instruction et de la coopération militaire
– Canada

QUESTIONS?



National
Défence

Défense
nationale

CANADIAN ARMY
COMMAND AND STAFF
COLLEGE



COLLÈGE DE COMMANDEMENT ET
D'ÉTAT-MAJOR DE L'ARMÉE
CANADIENNE



Directorate of Military Training and Cooperation –
Canada
Direction de l'instruction et de la coopération militaire
– Canada